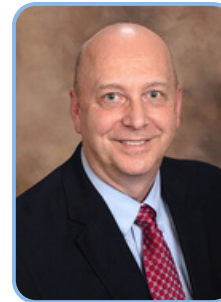




***"OMNI Practice Group is the leading provider of Practice Transitions, Sales, Valuations, Consulting and Real Estate Services."***

OMNI Practice Group was founded in 2004 with the mission of providing exceptional dental practice transition and real estate services that are personalized to meet your goals. Once we discover what you want or need, we create a tailored transition plan or consulting program designed to achieve results. Our team has over 100 years combined experience finding the perfect match for buyers and sellers.

## **Your Local Brokers**



**Rod Johnston, MBA, CMA**

*Owner & Principal Broker*

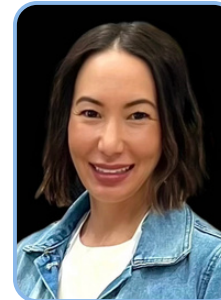
[rod@omni-pg.com](mailto:rod@omni-pg.com)  
(206) 979-2660



**Frank Sciabica, DDS**

*Practice Transition Specialist*

[frank@omni-pg.com](mailto:frank@omni-pg.com)  
(425) 985-8390



**Jen Bennett**

*Practice Transition Specialist*

[jen@omni-pg.com](mailto:jen@omni-pg.com)  
(206) 683-8966



**Steve Kikikis**

*Practice Transition Specialist*

[steve@omni-pg.com](mailto:steve@omni-pg.com)  
(425) 905-6920



## Current Dental Listings

omni-pg.com | info@omni-pg.com | (877) 866-6053

[Click here](#) to request additional information on any of the listings below.

WMO9011

### **FAMILY MEDICINE CLINIC FOR SALE IN BEAUTIFUL NORMANDY PARK**

Family Medicine practice located in Normandy Park, WA. Annual collections over \$625,000 in fast growing practice. Great location with newer build out and equipment. Contact Rod - 206-979-2660 or rod@omni-pg.com Lic.#24938

WD300

### **GREAT ANACORTES PRACTICE FOR SALE IN PRIME LOCATION**

Price Reduced - Motivated Seller - Practice and Real Estate. Four operatory practice with room to expand. Consistently over \$1 million in annual collections. Great staff, digital technology, dentrix software. Only 20 minutes West of I-5. Anacortes is a fast growing, beautiful community. Price reduced to \$650,000 for a quick sale. Contact Frank - 425-985-8390 or frank@omni-pg.com Lic.#130877

WAR178

### **DENTAL OFFICE FOR LEASE IN LAKE STEVENS**

1,755 SF built out dental office featuring 4 operatories, doctors office, consult room, sterile, lab, two in-suite restrooms, reception, private exit, and shared waiting area. Abundant parking and in a large retail plaza. You could expand the office for another 1,198 SF. Contact Steve - 425-905-6920 or steve@omni-pg.com Lic.#94563

WAR174

### **NORTH SEATTLE MEDICAL/DENTAL BUILDING FOR SALE**

Brookside Professional Center offers an excellent opportunity in the bustling real estate market of North Seattle. 3,001 RSF Dental Group 2031. Lease, NNN. 1,000 RSF Therapy Group Month to Month, NNN. 1,500 RSF Lower Office Space Vacant. Contact Steve - 425-905-6920 or steve@omni-pg.com Lic.#94563

WAR172

### **SHORELINE DENTAL OFFICE FOR SALE**

The office is in great condition and has 4 operational operatories and room for a fifth. Two ops are open concept and two ops are closed. There is a consultation room that could be plumbed with an operator making five total ops. Banks with 100% financing are available. 2,000 SF HOA and Expenses come to \$9.56 nnn per year. Contact Steve - 425-905-6920 or steve@omni-pg.com Lic.#94563

## **LOOKING FOR A PRACTICE?**

Due to confidentiality not all of practices are disclosed. [Click here](#) to visit our website to fill out the Buyer Registration form so we can help you find the perfect practice for you.



## Current Dental Listings

omni-pg.com | info@omni-pg.com | (877) 866-6053

[Click here](#) to request additional information on any of the listings below.

WAR165

### **NORTH SEATTLE OFFICE SPACE**

Newly built out office space 1,716 SF featuring open entry waiting/reception area, large conference room/office, four private offices, kitchenette, restroom, and storage. Plenty of parking. Excellent location for medical uses and/or office users. Right off of Hwy 99 at the Seattle Scottish Rite building. Contact Steve - 425-905-6920 or [steve@omni-pg.com](mailto:steve@omni-pg.com) Lic.#94563

WAD579

### **SNOHOMISH COUNTY ORTHODONTIC PRACTICE**

Well-established 6-chair Snohomish County Orthodontic office for sale, grossing \$780k in collections. The practice is in a growing population near major highways. Great parking and access. Contact Steve Kikikis at 425-905-6920 or [steve@omni-pg.com](mailto:steve@omni-pg.com) for more information. Lic.#94563

WAD571

### **MODIFIED START-UP IN THE UNIVERSITY DISTRICT**

On track to collect \$480K in 2024. Practice has been in the same location for over 25 years. Open 4 days/week with 2 hygienist days/week. 3 equipped ops with 2 additional ops plumbed. Dentrix software. Contact Frank Sciabica at 425-985-8390 or [frank@omni-pg.com](mailto:frank@omni-pg.com) Lic. #130877

WAD569

### **SIX OP PRACTICE IN THE CASCADE FOOTHILLS JUST OFF OF I-90**

Annual Collections of \$1.2 million with year over year growth. The practice is well managed with overhead below the national average at 61%. Most endo, ortho and oral surgery referred out. Over 1,700 active patients. Poised for further growth. Contact Rod - 206-979-2660 or [rod@omni-pg.com](mailto:rod@omni-pg.com) Lic.#24938

WAD567

### **\$1 MIL PRACTICE NORTH WHATCOM COUNTY**

With real estate for sale. Owner refers out many procedures that could be kept in-house for immediate production increase. Three equipped ops with two additional plumbed. Great opportunity! Contact Frank Sciabica at 425-985-8390 or [frank@omni-pg.com](mailto:frank@omni-pg.com) Lic. #130877

## **LOOKING FOR A PRACTICE?**

Due to confidentiality not all of practices are disclosed. [Click here](#) to visit our website to fill out the Buyer Registration form so we can help you find the perfect practice for you.



## Current Dental Listings

omni-pg.com | info@omni-pg.com | (877) 866-6053

[Click here](#) to request additional information on any of the listings below.

WAD564

### **HIGH VISIBILITY-HIGH TRAFFIC SPOKANE GENERAL DENTAL PRACTICE**

Annual collections over \$1.4 million. Six modern, digital operatories. Cone Beam x-rays. Over 1,500 active patients. Average of 30 new patients per month with minimal marketing. Contact Frank Sciabica at 425-985-8390 or frank@omni-pg.com Lic. #130877

WAD559

### **STUNNING 6 OP DOWNTOWN PRACTICE GROSSING 900K**

6 hygiene days per week. Seller refers out many procedures that could be kept in house. Great views of the city from everywhere in the office. Seller willing to stay for a transition. Contact Frank - 425-985-8390 or frank@omni-pg.com Lic. #130877

WAD553

### **HIGH PROFIT OLYMPIA PRACTICE**

Reputable Olympia dental practice, with a solid patient base, state-of-the-art equipment, and a prime location. The current owner is willing to assist with the transition and willing to work back on a year to year contract at buyers request. 5 fully equipped ops with an additional plumb. Contact Jen - 206-683-8966 or jen@omni-pg.com

WAD552

### **WELL ESTABLISHED EVERETT PRACTICE GROSSING 700K**

Very well established 4 operator practice with 2 additional ops plumbed. Refers out many procedures so a lot of growth potential. High visibility location. Contact Frank - 425-985-8390 or frank@omni-pg.com Lic. #130877

WAD551

### **GENERAL DENTAL PRACTICE NEAR THE UNIVERSITY OF WASHINGTON**

General Dental Practice located near the University of Washington. Annual collections over \$1 million in a conveniently located three operator practice. Well established practice with a great reputation. Contact Rod - 206-979-2660 or rod@omni-pg.com Lic.#24938

## **LOOKING FOR A PRACTICE?**

Due to confidentiality not all of practices are disclosed. [Click here](#) to visit our website to fill out the Buyer Registration form so we can help you find the perfect practice for you.

WAD549

### **KIRKLAND DENTAL PRACTICE FOR SALE**

Prosthodontic emphasis in this four operator practice with room for expansion. Annual collections of approximately \$700,000. Good flow of new patients. Can be a general dental practice, or prosthodontic practice. Contact Frank Sciabica at 425-985-8390 or frank@omni-pg.com Lic. #130877

WAD546

### **PEDIATRIC PRACTICE AND BUILDING FOR SALE WHATCOM COUNTY**

Escape the Hustle and bustle and enjoy practice in beautiful and growing Whatcom County, WA. Annual collections of approximately \$600,000. Plenty of room for growth in this 6 op, 2,500 square foot building. Contact Rod Johnston at 206-979-2660 or rod@omni-pg.com Lic.#24938

WAD545

### **FAST START PRACTICE NEAR GREEN LAKE**

Newly built four fully-equipped ops, growing patient base, projected collections in 2024 over \$300,000. Highly trafficked location with excellent visibility. Dentrux software, pano, 3D printer, Itero 5D scanner and photography studio. Priced to sell at \$250,000. Contact Frank Lic 130877 - 425-985-8390 or frank@omni-pg.com Lic. #130877

WAD543

### **NORTH SEATTLE GENERAL DENTAL PRACTICE NEAR GREEN LAKE**

Average annual collections of \$350,000 in five operatories over the past 3 years. Contact Frank - 425-985-8390 or frank@omni-pg.com Lic. #130877

WAD540

### **HIGH PRODUCING EVERETT FAMILY PRACTICE**

Grossing 1.8MIL\$ with real estate for sale as well. Beautiful. 8 hygiene days/week. Practice averaging 40 new patients/month. Acquire this profitable practice and or move your current practice into this 10 op facility and take this practice to the next level. Contact Frank - 425-985-8390 or frank@omni-pg.com Lic. #130877

WAD538

**4 OP FEDERAL WAY PRACTICE**

4 Op Federal Way practice for incredible potential for growth. The existing owner refers out many procedures that could add increased revenue to this practice. This practice receives 25-30 new patients/mo and poised for growth. Contact Frank - 425-985-8390 or frank@omni-pg.com Lic. #130877

WAD526

**NORTH SEATTLE HYBRID ABSENTEE OWNED DENTAL PRACTICE**

Annual collections over \$1.6 million in 10 operatories. Practice employs general dentist, periodontist and endodontist. Most dentistry can be done in-house. If you're looking for either an investment practice, or a practice to work yourself, you should check this out. Contact Frank - 425-985-8390 or frank@omni-pg.com Lic. #130877

WAD524

**WELL-ESTABLISHED EAST SNOHOMISH COUNTY DENTAL PRACTICE**

14 new patients per month; 100% referral from existing loyal patient base. Over \$500K in collections for past three years working three days per week. 4 fully equipped ops + 1 additional op. Excellent opportunity for growth. Contact Frank Sciabica at 425-985-8390 or frank@omni-pg.com Lic. #130877

WAD523

**EASTSIDE GENERAL DENTAL PRACTICE - PRIME LOCATION**

4 Ops. No in-network insurance plans. Seller open to work back. Over \$1 Mil in annual collections for past three years. Unique hybrid practice. Contact Rod - 206-979-2660 or rod@omni-pg.com Lic.#24938

WAD516

**ESTABLISHED RENTON PRACTICE GROSSING \$1.6 MIL**

Wonderful opportunity to take over and grow this practice to its full potential. Owner currently splitting time at his other practice and is spread very thin. This practice needs a full-time operator. Nice, modern office with all digital technology including CBCT. Contact Frank - 425-985-8390 or frank@omni-pg.com Lic. #130877



## Current Dental Listings

omni-pg.com | info@omni-pg.com | (877) 866-6053

[Click here](#) to request additional information on any of the listings below.

WAD513

### **SNOHOMISH COUNTY GENERAL DENTAL PRACTICE**

Beautiful stand-alone building with excellent visibility in a residential neighborhood. Strong hygiene program - 6 hygiene days per week. 7 fully-equipped ops (4 hygiene and 3 clinical). Ample patient parking. Over \$1.4 Mil in Production YTD. Open Dental Software, KAVO CBCT. Contact Frank - 425-985-8390 or frank@omni-pg.com Lic. #130877

WAD506

### **STUNNING KITSAP COUNTY DENTAL PRACTICE NOW AVAILABLE**

Prime location in a beautiful modern building. Practice is in a professional business complex with easy access, ample parking, and nice visibility. Contact Frank - 425-985-8390 or frank@omni-pg.com Lic. #130877

WAD505

### **PROSTHODONTIC PRACTICE IN DOWNTOWN SEATTLE**

Over \$1 Mil in production each year for the past three years. 4 fully-equipped ops. 8 hygiene days per week. Dentrix software. Seller willing to work back 6 months to 1 year. Contact Frank - 425-985-8390 or frank@omni-pg.com Lic. #130877

WAD496

### **SNOHOMISH GENERAL DENTAL PRACTICE**

Annual collections over \$300,000. 3 fully-equipped ops with option to lease an adjoining vacant office which would give you up to 7 total operatories. Seller willing to work back 1-2 days/week if needed. Implants and molar RCT referred out. Ample patient parking. Contact Frank - 425-985-8390 or frank@omni-pg.com Lic. #130877

WAD491

### **4 OP KENT PRACTICE IN HIGH VISIBILITY LOCATION**

Nicely appointed 4 op Kent practice on major thoroughfare grossing 650K/year. Very reasonable rent with great landlord. Staff willing to stay on to help with the transition. Contact Frank - 425-985-8390 or frank@omni-pg.com Lic. #130877

## **LOOKING FOR A PRACTICE?**

Due to confidentiality not all of practices are disclosed. [Click here](#) to visit our website to fill out the Buyer Registration form so we can help you find the perfect practice for you.



WAD476

**TURN-KEY GENERAL DENTAL PRACTICE - SOUTH SEATTLE**

Excellent dental start-up. Fully equipped turn-key practice 4 ops, shell space. No patients. South Seattle location. Contact Rod - 206-979-2660 or rod@omni-pg.com Lic.#24938

ORD180

**EUGENE OREGON - PRACTICE FOR SALE**

Collections over \$800,000 in 5 ops. Wonderful opportunity as investment practice or work it yourself. Associate possibly stay on part-time. Growth opportunity as surgical implants, oral surgery, ortho and most endo is referred out. Averaging 22 NP per month. Contact Megan - 503-830-5765 or megan@omni-pg.com Lic.#201221407

WAD455

**BEAUTIFUL BAINBRIDGE ISLAND GENERAL DENTAL PRACTICE**

4 fully equipped ops - 2 operative and 2 hygiene. Great staff, loyal patient base. Collections over \$1 mil for past three years. Contact Frank - 425-985-8390 or frank@omni-pg.com Lic. #130877

WAD429

**NICELY APPOINTED ISLAND GENERAL DENTAL PRACTICE GROSSING 550K**

Great location in growing area. 3 day a week practice running at 40% overhead - room for growth! Contact Frank - 425-985-8390 or frank@omni-pg.com Lic. #130877

WAD397

**WELL-RESPECTED PRACTICE ON BEAUTIFUL SAN JUAN ISLAND**

Motivated seller willing to carry portion of financing. Over \$700K in only 15 working days per month. Three operatories with potential for four. Waterfront home with mooring and beach available to rent if desired. Contact Rod - 206-979-2660 or rod@omni-pg.com Lic.#24938

ORR105

**SALEM OREGON - DENTAL, MEDICAL, VETERINARY BUILDING FOR SALE**

2784 SF, 4+ ops. On-site parking. Dental lab currently renting basement. Upstairs could potentially be rented out as office space or ADU. Contact Megan - 503-830-5765 or megan@omni-pg.com Lic.#201221407





## Current Dental Listings

omni-pg.com | info@omni-pg.com | (877) 866-6053

[Click here](#) to request additional information on any of the listings below.

WAD590

### **HIGHLY COVETED ISSAQUAH PRACTICE FOR SALE**

Recently updated, modern, relaxing Issaquah practice grossing 850K for sale. This 7 op practice includes the latest technology, including CBCT, CEREC, and iTero. Very relaxing atmosphere with lots of natural light and ready for new owner to take to the next level. This opportunity will not last long. Contact Frank Sciabica at 425-985-8390 or frank@omni-pg.com for more information. Lic. #130877 (WAD590)

## LOOKING FOR A PRACTICE?

Due to confidentiality not all of practices are disclosed. [Click here](#) to visit our website to fill out the Buyer Registration form so we can help you find the perfect practice for you.